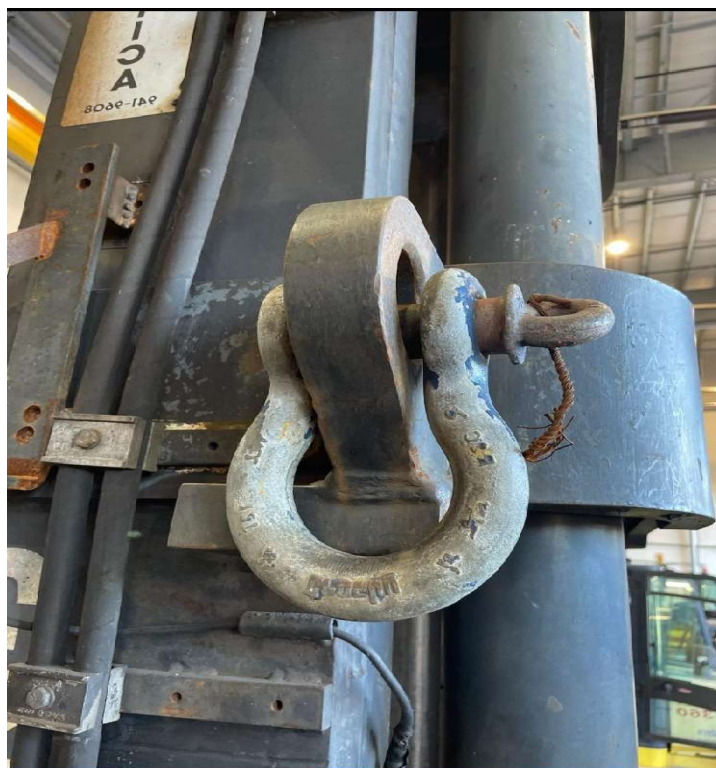


SAFETY BULLETIN

SHACKLES ON SHIP LIFT TRUCKS

Attention

- We have had a report of a Ship Lift Truck being returned with the seizing wire on one of the shackles broken and the shackle pin partially backed out
- The shop inspects the machines upon their return and will address any issues with the lifting bridles but it is still possible for issues to develop while the machines are in production
- Please take the time to inspect the shackles before lifting a machine to ensure the shackle pins are properly installed and the seizing wire is intact.



SAFETY IS EVERYONE'S RESPONSIBILITY

<https://sharepoint.westeve.com>